



N & B HOMES



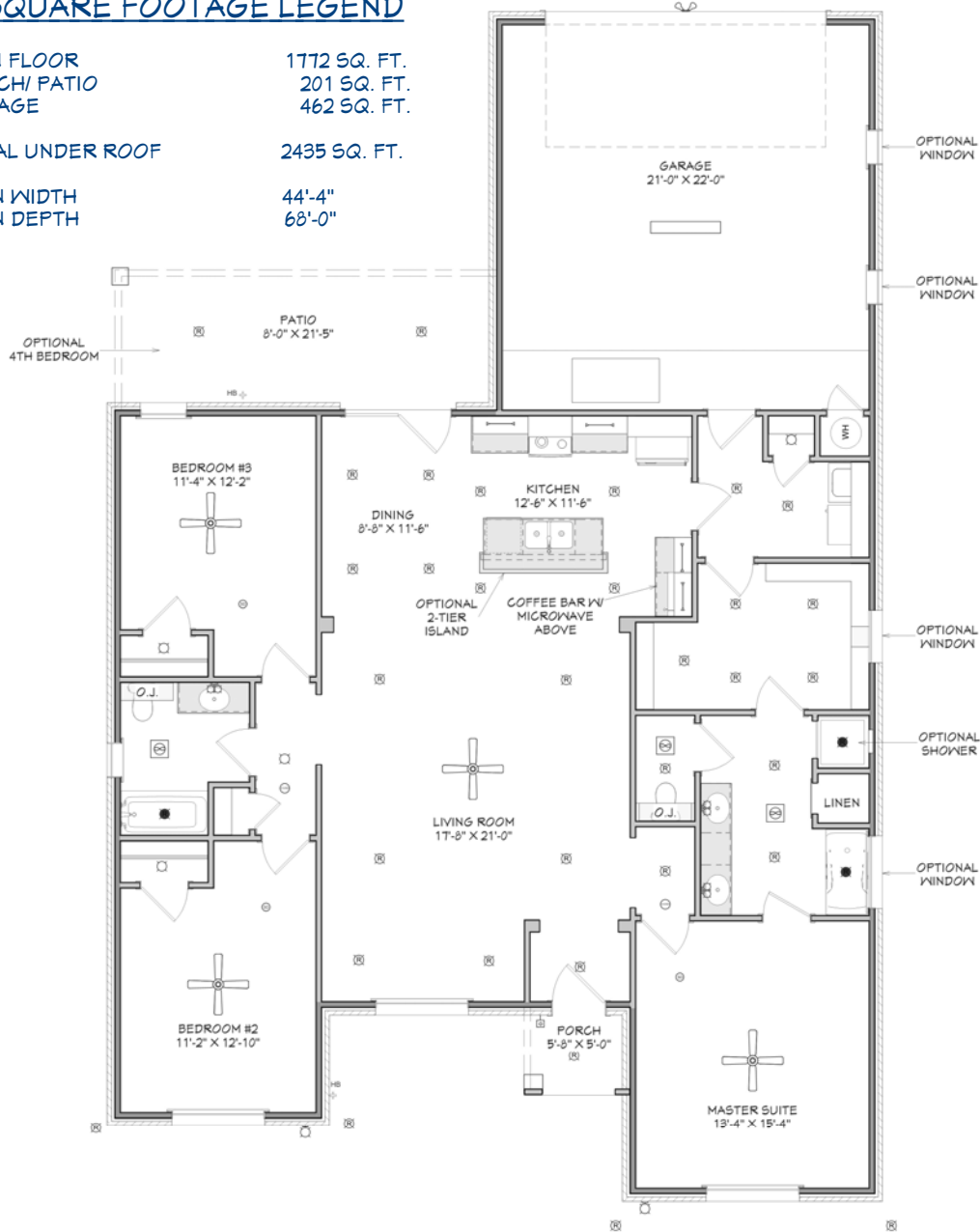
Welcome Home

The **VAIL**  
+/- 1772 sq. ft.

"Through Wisdom a House is Built, and by Understanding it is Established." Proverbs 24:3

**SQUARE FOOTAGE LEGEND**

MAIN FLOOR	1772 SQ. FT.
PORCH/ PATIO	201 SQ. FT.
GARAGE	462 SQ. FT.
<b>TOTAL UNDER ROOF</b>	<b>2435 SQ. FT.</b>
PLAN WIDTH	44'-4"
PLAN DEPTH	68'-0"



**Robbie Christie - Builder (806) 681-8198**

[nandbhomes.com](http://nandbhomes.com)



(Prices, room sizes and sq. ft. may vary and are subject to change.)

Use of floor plans, elevations and renderings as designer's concepts and are the property of Christie Homes, Inc. Use of floor plans, elevations, and or renderings in part or in whole is a violation of federal copyright laws and will be prosecuted to the fullest extent of the law.