



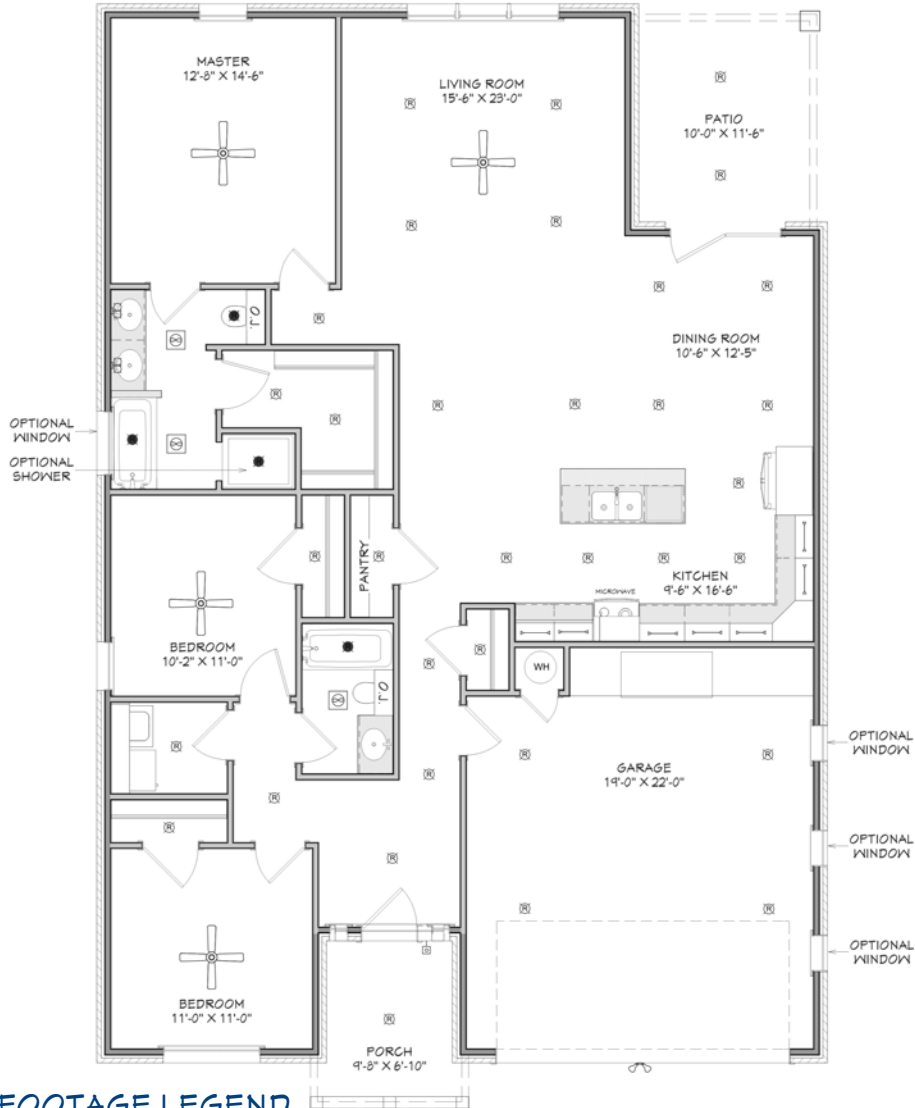
N & B HOMES



Welcome Home

The **TYLER**  
+/- 1694 sq. ft.

"Through Wisdom a House is Built, and by Understanding it is Established." Proverbs 24:3



**SQUARE FOOTAGE LEGEND**

MAIN FLOOR 1694 SQ. FT.  
 PORCH/ PATIO 230 SQ. FT.  
 GARAGE 451 SQ. FT.

TOTAL UNDER ROOF 2375 SQ. FT.

PLAN WIDTH 40'-0"  
 PLAN DEPTH 57'-11"

**Robbie Christie - Builder (806) 681-8198**

[nandbhomes.com](http://nandbhomes.com)



(Prices, room sizes and sq. ft. may vary and are subject to change.)

Use of floor plans, elevations and renderings are designer's concepts and are the property of N & B Homes, Inc. Use of floor plans, elevations, and or renderings in part or in whole is a violation of federal copyright laws and will be prosecuted to the fullest extent of the law.