

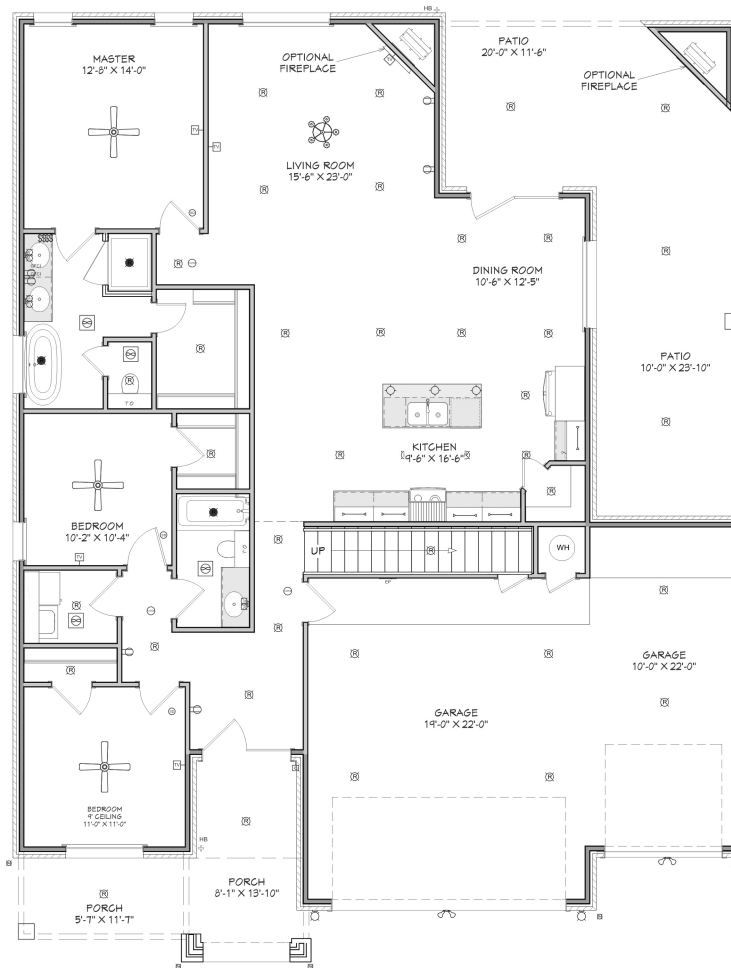


N & B HOMES



# The TYLER XL 3-CAR +/- 2823 sq. ft.

"Through Wisdom a House is Built, and by Understanding it is Established." Proverbs 24:3

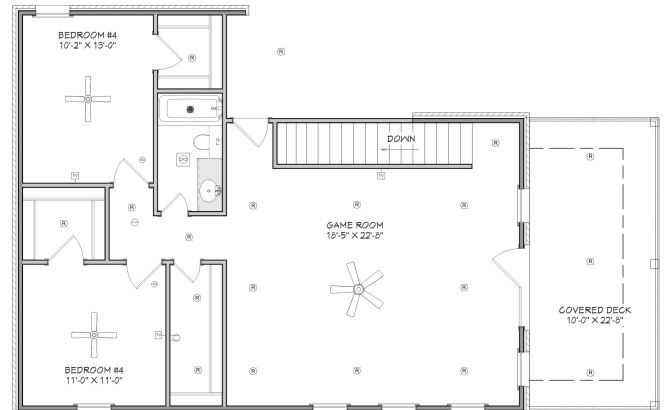


## SQUARE FOOTAGE LEGEND

MAIN FLOOR	1751 SQ. FT.
SECOND FLOOR	1072 SQ. FT.
PORCH/ PATIO	425 SQ. FT.
DECK	225 SQ. FT.
GARAGE	671 SQ. FT.

TOTAL UNDER ROOF 4114 SQ. FT.

PLAN WIDTH 40'-0"  
PLAN DEPTH 61'-6"



SECOND FLOOR

FIRST FLOOR

Robbie Christie - Builder (806) 681-8198  
nandbhomes.com



(Prices, room sizes and sq. ft. may vary and are subject to change.)

Use of floor plans, elevations and renderings are designer's concepts and are the property of N & B Homes, Inc. Use of floor plans, elevations, and or renderings in part or in whole is a violation of federal copyright laws and will be prosecuted to the fullest extent of the law.