

N & B HOMES



The JAXON A SIDE ENTRY +/- 2251 sq. ft.

"Through Wisdom a House is Built, and by Understanding it is Established." Proverbs 24:3

SQUARE FOOTAGE LEGEND

MAIN FLOOR
PORCH/ PATIO
GARAGE

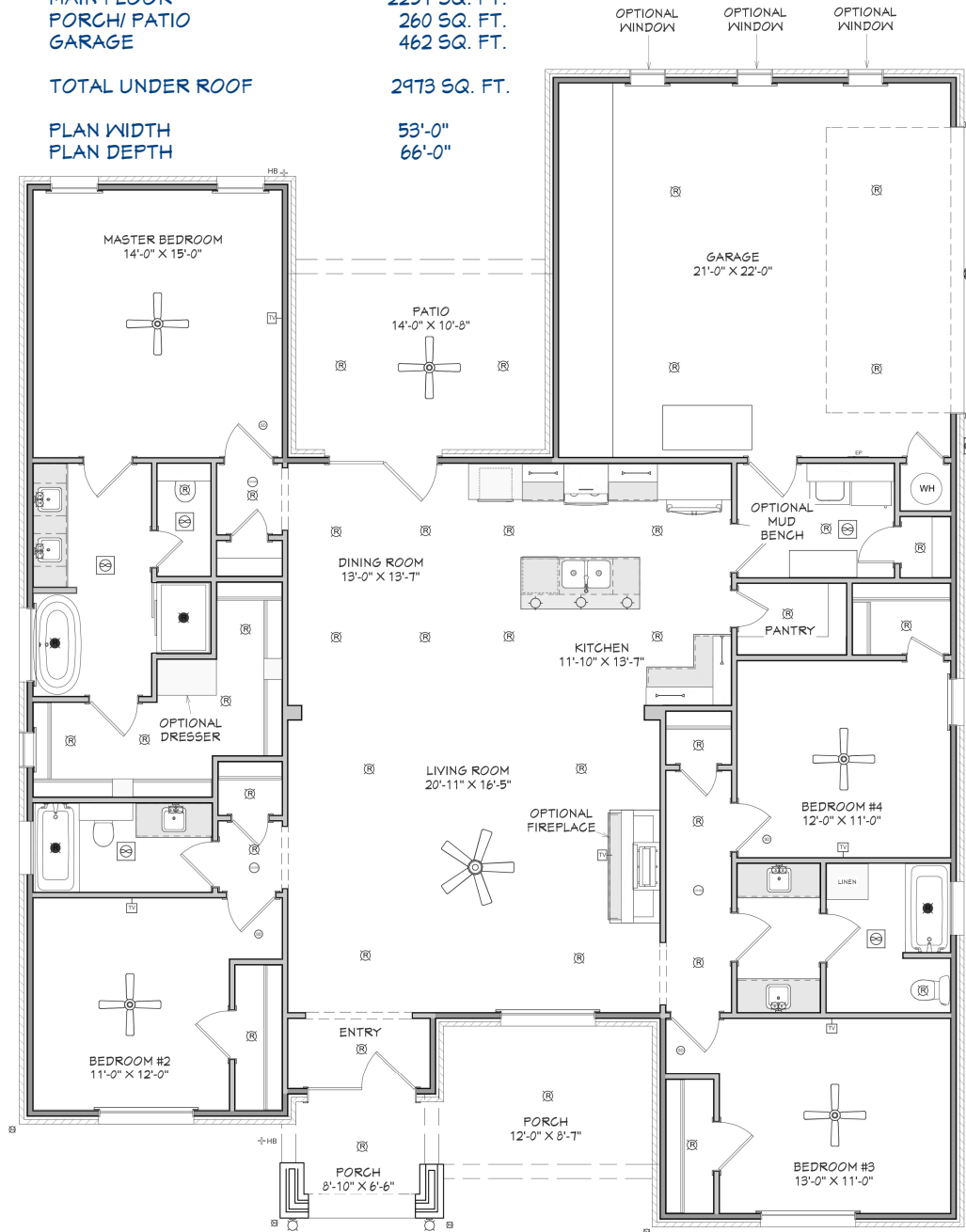
2251 SQ. FT.
260 SQ. FT.
462 SQ. FT.

TOTAL UNDER ROOF

2973 SQ. FT.

PLAN WIDTH
PLAN DEPTH

53'-0"
66'-0"



Robbie Christie - Builder (806) 681-8198

nandbhomes.com



(Prices, room sizes and sq. ft. may vary and are subject to change.)

Use of floor plans, elevations and renderings are designer's concepts and are the property of N & B Homes, Inc. Use of floor plans, elevations, and or renderings in part or in whole is a violation of federal copyright laws and will be prosecuted to the fullest extent of the law.