

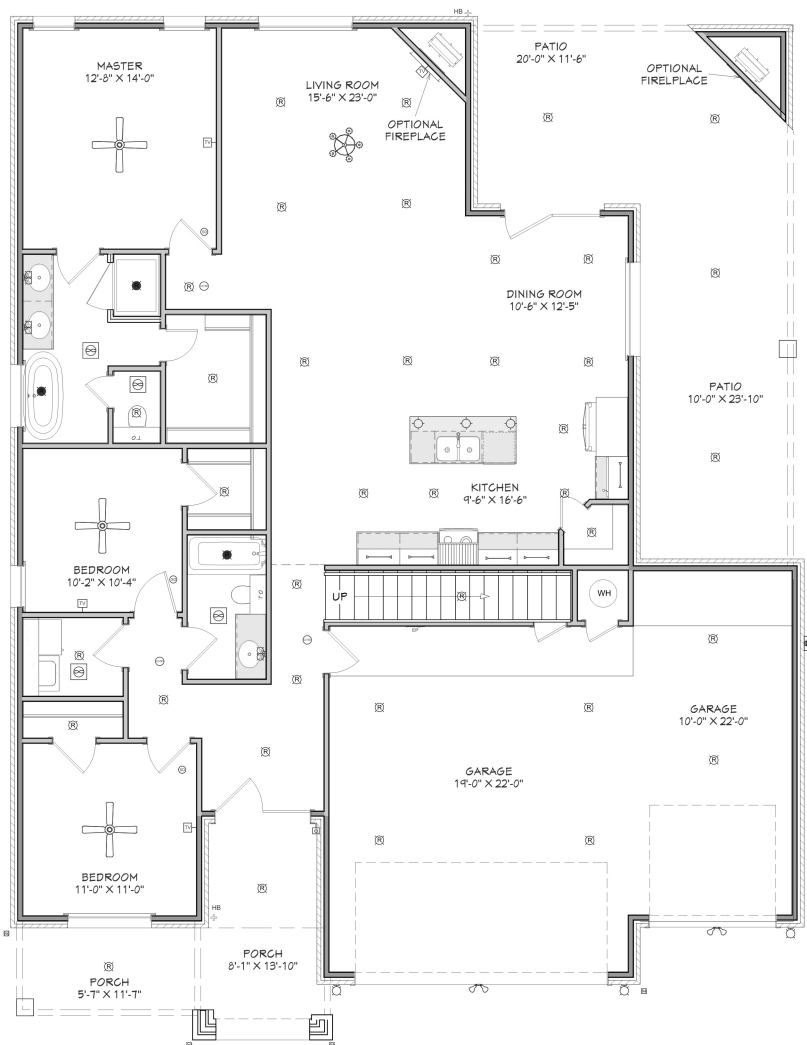


N & B HOMES

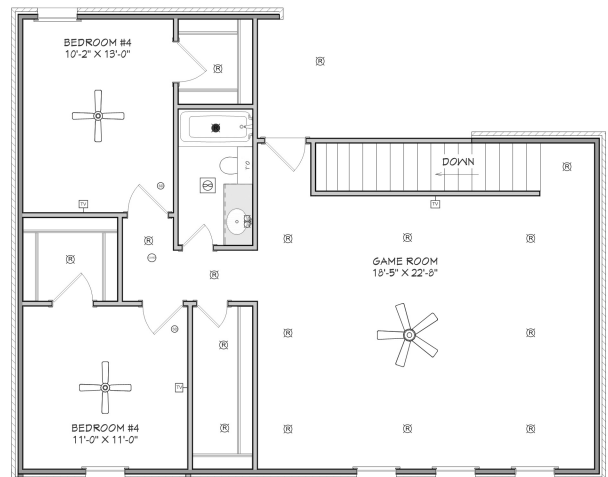


# The TYLER XL 3-CAR NO BALCONY +/- 2823 sq. ft.

"Through Wisdom a House is Built, and by Understanding it is Established." Proverbs 24:3



FIRST FLOOR



SECOND FLOOR

## SQUARE FOOTAGE LEGEND

MAIN FLOOR	1751 SQ. FT.
SECOND FLOOR	1072 SQ. FT.
PORCH/ PATIO	425 SQ. FT.
GARAGE	671 SQ. FT.
<b>TOTAL UNDER ROOF</b>	<b>3889 SQ. FT.</b>
<b>PLAN WIDTH</b>	<b>50'-0"</b>
<b>PLAN DEPTH</b>	<b>65'-0"</b>

Robbie Christie - Builder (806) 681-8198

[nandbhomes.com](http://nandbhomes.com)



(Prices, room sizes and sq. ft. may vary and are subject to change.)

Use of floor plans, elevations and renderings are designer's concepts and are the property of N & B Homes, Inc. Use of floor plans, elevations, and or renderings in part or in whole is a violation of federal copyright laws and will be prosecuted to the fullest extent of the law.