



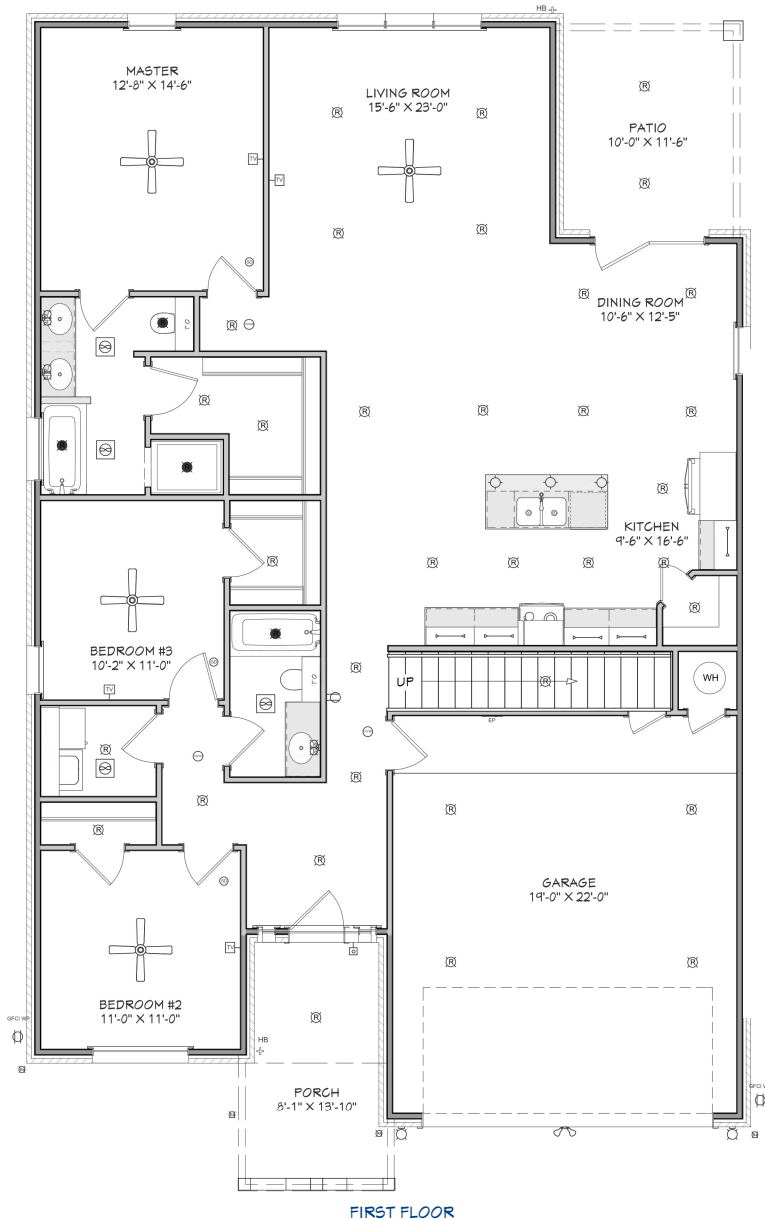
N & B HOMES



# The TYLER XL

+/- 2823 sq. ft.

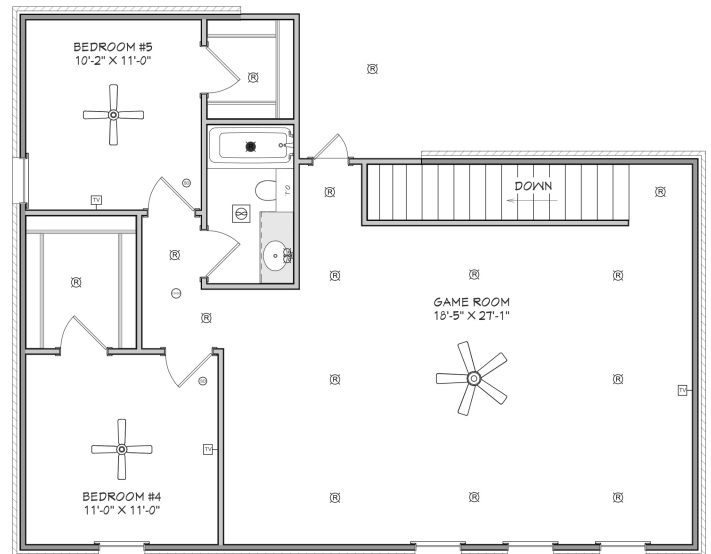
"Through Wisdom a House is Built, and by Understanding it is Established." Proverbs 24:3



FIRST FLOOR

## SQUARE FOOTAGE LEGEND

MAIN FLOOR	1751 SQ. FT.
SECOND FLOOR	1072 SQ. FT.
PORCH/ PATIO	230 SQ. FT.
GARAGE	451 SQ. FT.
<b>TOTAL UNDER ROOF</b>	<b>2375 SQ. FT.</b>
<b>PLAN WIDTH</b>	<b>40'-0"</b>
<b>PLAN DEPTH</b>	<b>65'-0"</b>



SECOND FLOOR

Robbie Christie - Builder (806) 681-8198

[nandbhomes.com](http://nandbhomes.com)



(Prices, room sizes and sq. ft. may vary and are subject to change.)

Use of floor plans, elevations and renderings are designer's concepts and are the property of N & B Homes, Inc. Use of floor plans, elevations, and or renderings in part or in whole is a violation of federal copyright laws and will be prosecuted to the fullest extent of the law.