



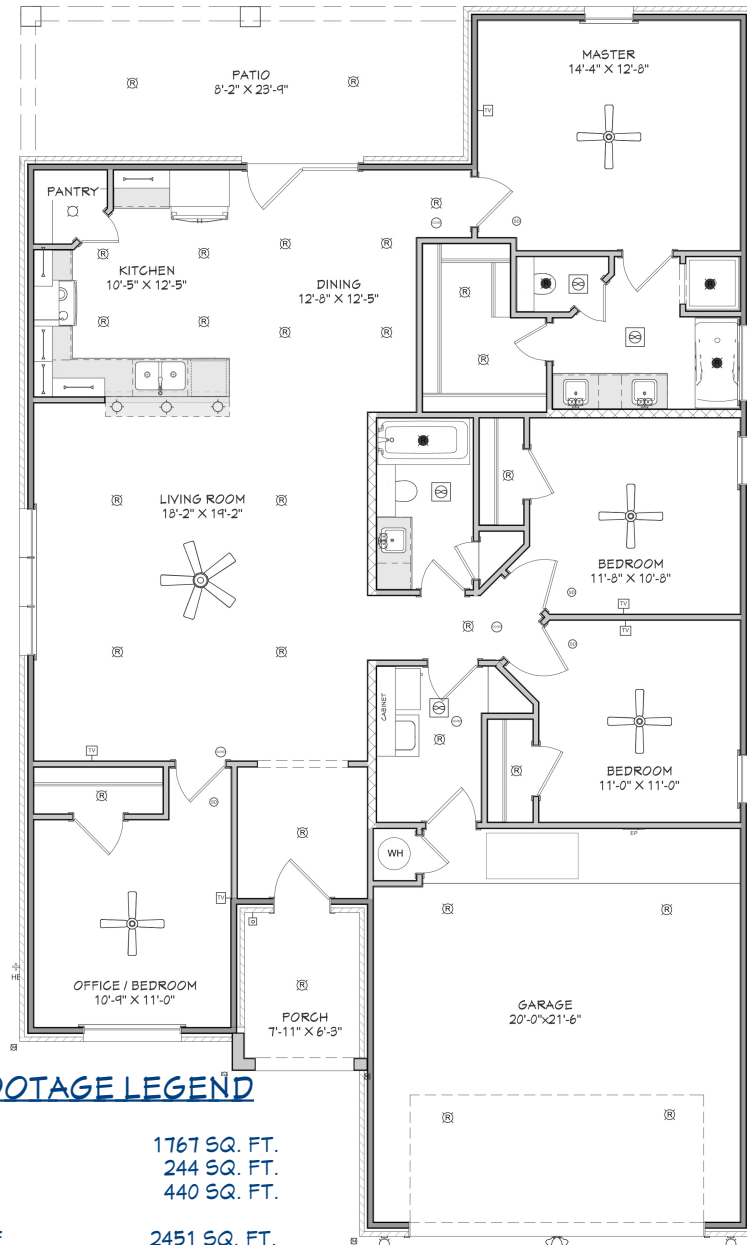
N & B HOMES



The CORBIN B

+/- 1767 sq. ft.

"Through Wisdom a House is Built, and by Understanding it is Established." Proverbs 24:3



SQUARE FOOTAGE LEGEND

MAIN FLOOR	1767 SQ. FT.
PORCH/ PATIO	244 SQ. FT.
GARAGE	440 SQ. FT.
TOTAL UNDER ROOF	2451 SQ. FT.
PLAN WIDTH	40'-0"
PLAN DEPTH	67'-0"

Robbie Christie - Builder (806) 681-8198

nandbhomes.com

(Prices, room sizes and sq. ft. may vary and are subject to change.)

Use of floor plans, elevations and renderings are designer's concepts and are the property of N & B Homes, Inc. Use of floor plans, elevations, and or renderings in part or in whole is a violation of federal copyright laws and will be prosecuted to the fullest extent of the law.

